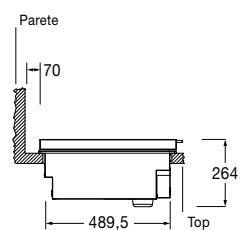
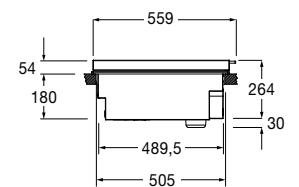
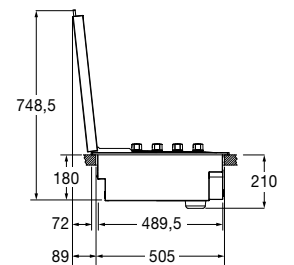


Low lid 1000

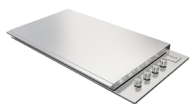
FOBQ LL 1000 X



- AISI 316 stainless steel finish
- Steel flat knob



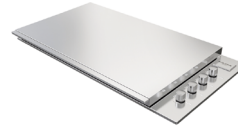
NOTE: In the image, other than seeing the lid also the BBQ is shown (sold separately)



STAINLESS STEEL
FOBQ LL 1000 X
EAN 8019801021871

BBQ

BARBECUE GAS 1000



FOBQ LL 1000 X	
Type	Low lid
Finish	Stainless steel
FEATURES	
Knob material / no.	-
Teppanyaki (material)	-
Grates (material)	-
Tubular burners	-
Inner tub	-
Steel knob	•
Supply	-
Grates no.	-
Gastronorm liquid-collection tray	-
Heating grid	-
Total gas burner power	-
Electronic ignition	-
Battery ignition	-
Thermometer / gas types	- / -
DIMENSIONS	
Cooking zone width (mm)	-
Width (mm)	920 x 54 x 559
Built-In Cut Out (W x H x D) mm	-