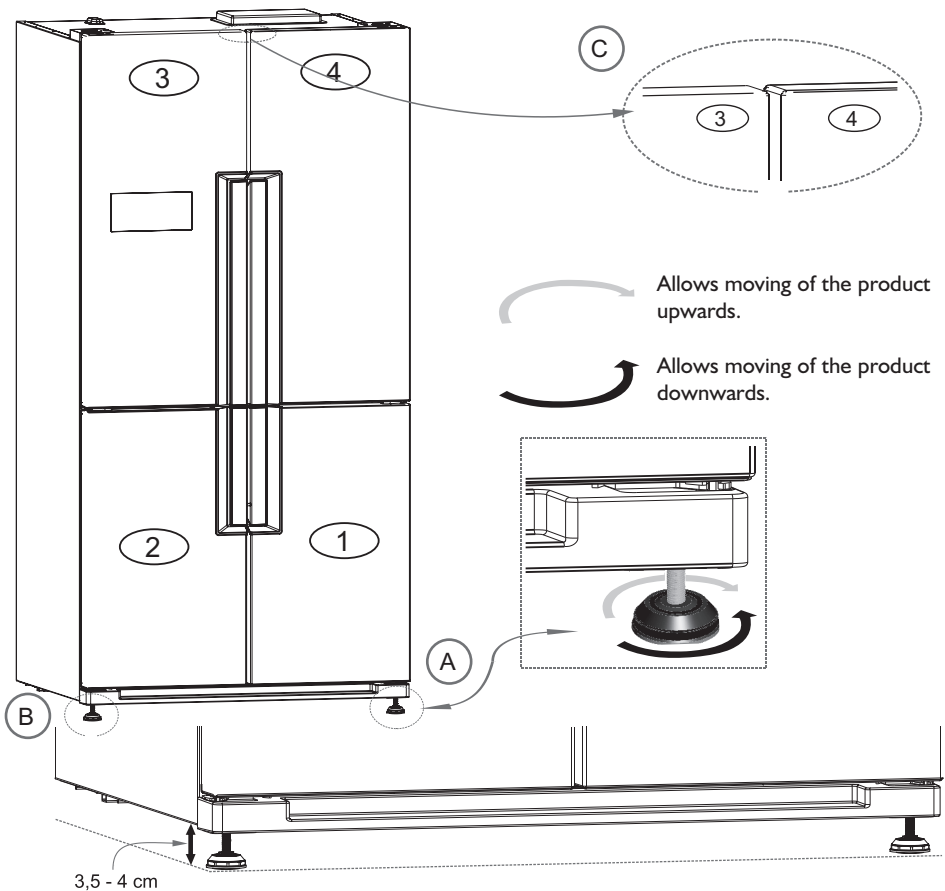


ADJUSTING THE FEET

When installing the refrigerator, or when repositioning it, adjustment of the feet is necessary to ensure the doors close properly and the refrigerator is stable and level.

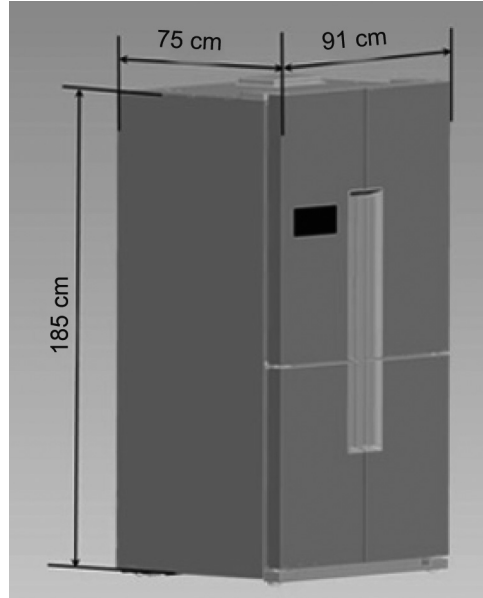
After placing the refrigerator on a level floor, remove the protective tapes from between the upper doors and the body.

1. Starting on the righthand side of the refrigerator, rotate the front foot to either increase or decrease the space between the bottom of the fridge and the floor until the gap measures 3.5 to 4cm (A).
2. Adjust the remaining feet in the same way until doors 1 and 2 are level (B).
3. Make sure the upper doors are level (C). If necessary, make adjustments using the door adjustment tool provided (see below).



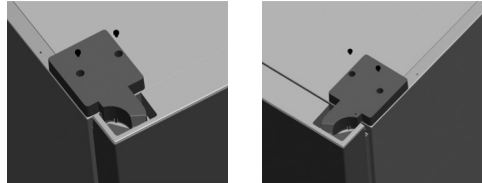
Before installing your appliance, check the dimensions of the door that the appliance shall be taken through during the carrying of your appliance according to the dimensions given at the side.

If the dimensions of the door do not allow carrying of the appliance, carry your appliance by removing the doors.

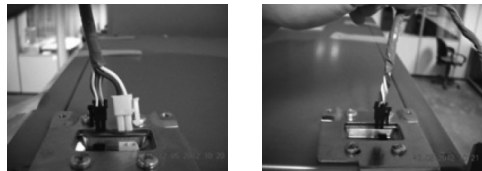


FOLLOW THE STEPS BELOW TO REMOVE THE DOORS FOR TRANSIT

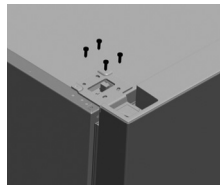
- 1) Remove 2 screws shown in the figure, and remove the upper hinge covers on the left and right.



- 2) Remove the sockets visible under the hinge cover.

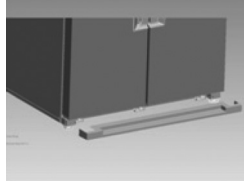


- 3) Remove 4 screws connected to the upper hinge.

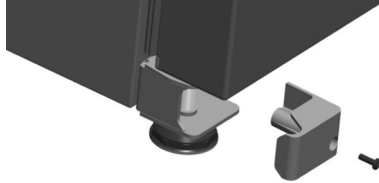


- 4) Remove the fridge compartment doors individually by pulling them upwards carefully. Wrap them in air bags and put them in a safe place.

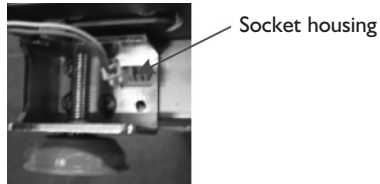
- 5) Remove the footguard by releasing it from its' tabs. There are 3 footguard holders, namely on the left and right corners and in the middle. Release the footguard from its' tabs by pressing with your hand on the areas where the holders are placed.



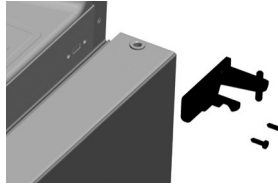
- 6) Take the lower hinge covers out by removing their screws.



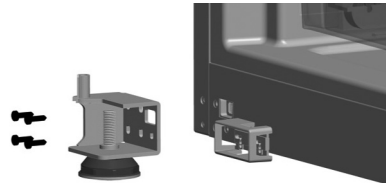
- 7) Take the socket shown below after removing the lower hinge cover.



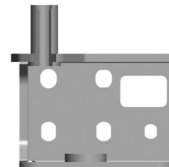
- 8) Take the middle hinges out by removing 2 screws on them.



- 9) Take the freezer doors individually and carefully as for the fridge compartment doors, wrap them in air bags and put them in a safe place.

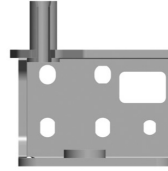


- 10) Remove the lower hinge, if required. (If the clearance is not enough)

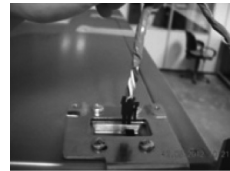
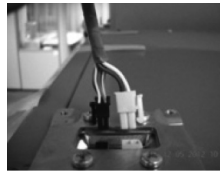


After completing the carrying operation:

- 11) Place the freezer doors on the lower hinge and secure the door by installing middle hinges.
- 12) If there is a level difference between the freezer doors, adjust using the slots on the lower hinge shown below.



- 13) After installing the sockets on the lower hinge properly, install the lower hinge cover and its screws.
- 14) Place the footguard so that it is seated on its tabs. (If the holders that retain the footguard tabs are broken while removing the footguard, replace them with the spare holders on the document bag.)
- 15) Place the fridge compartment doors, and install the screws on the upper hinge without tightening them completely.
- 16) Install the sockets considering their locking directions.

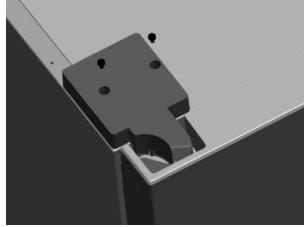


ADJUSTING THE CLEARANCE BETWEEN COMPARTMENT DOORS

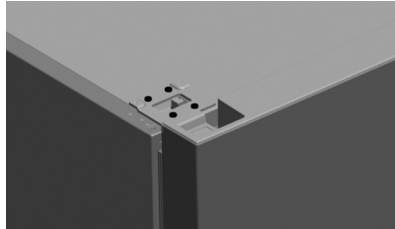
For the fridge to work at peak efficiency, adjust the clearance between the compartment doors before use.

First, remove the protective tape between the upper doors and the fridge body.

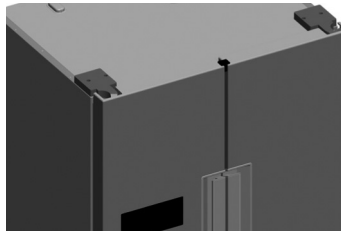
- 1) Remove the 2 screws as shown in the image.
Remove both right and left upper hinge covers.



- 2) Loosen, but do not remove, the 4 screws in both upper hinges.



- 3) Place the door adjustment tool (provided) between the doors as shown, to hold them in the correct position.



- 4) Tighten the screws in both upper hinges.
- 5) Replace the hinge covers and screws, concealing the cables.